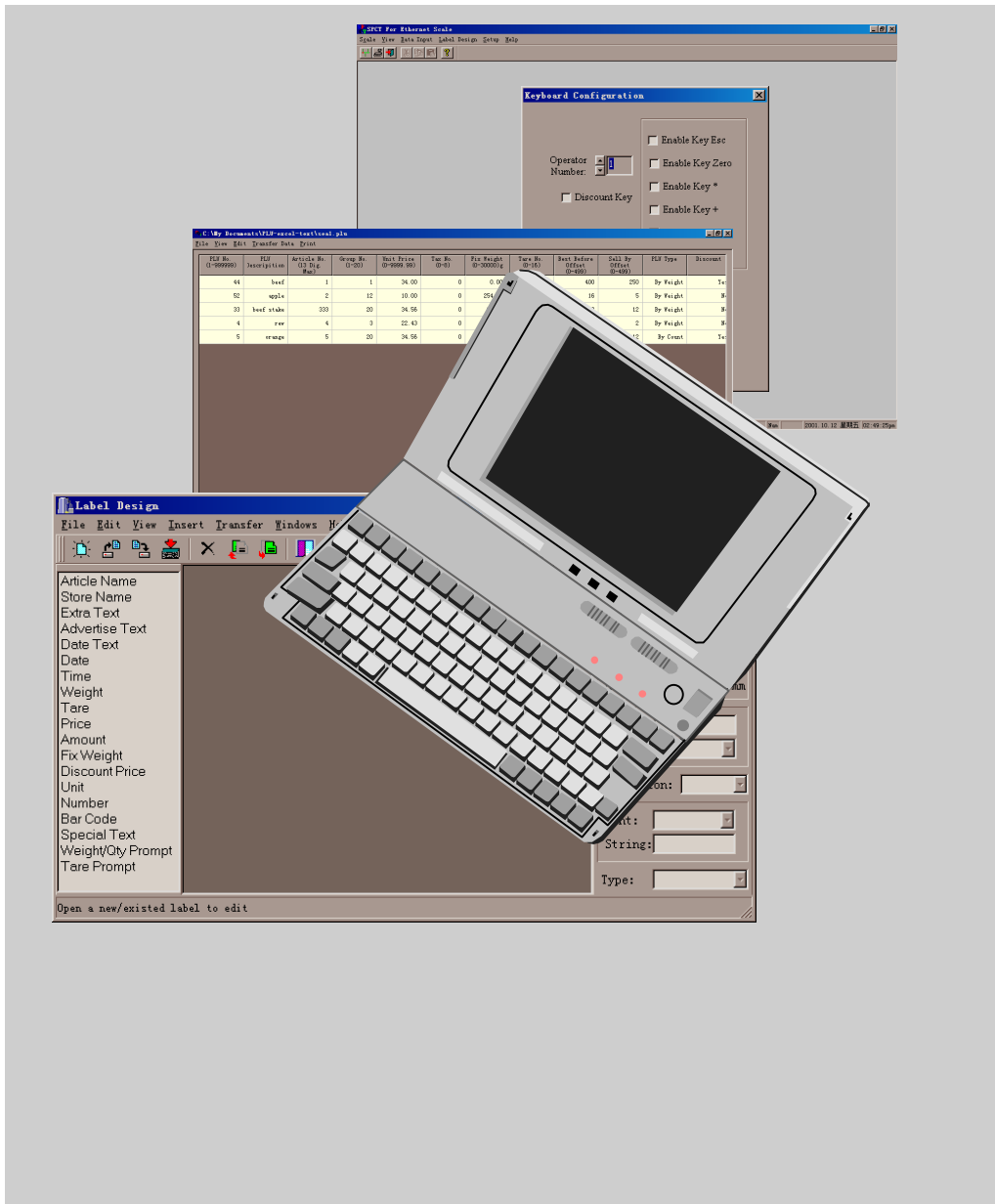


METTLER-TOLEDO

PC SOFTWARE

OPERATOR MANUAL

FLASH / SPCT



METTLER TOLEDO

CONTENT

BRIEF INTRODUCTION	3
INSTALLATION	4
Basic requirement of hardware and software.....	4
Communication cable	4
Install FLASH to HD.....	4
Install SPCT to HD	4
RUN FLASH.....	5
STARTUP SPCT.....	7
MANAGE SCALE No.	8
Configure scale No.	8
Manage Scale No.	8
SETUP	9
Set time	9
Set Network Media	9
Set operator configure	9
DATA ENTRY	11
PLU.....	11
Create PLU	11
Download PLU.....	12
Upload PLU	12
Keyboard Configuration	12
Group.....	13
Operator	13
Tax Rate	14
Decrease Percent.....	15
DATE TEXT	15
Barcode.....	15
Running Message.....	16
Header Footnote	16
ADVERTISE TEXT.....	16
STORE NAME	17
CONFIGURE GENERAL LABEL FORMAT	17
SERVICE LABEL.....	17
TOTAL LABEL	17
Prepack label	18
DESIGN LABEL FORMAT	19
INTERFACE.....	19
NEW LABEL	19
LOAD LABEL FROM LIBRARY	20
OPEN LABEL FILE	20
EDIT LABEL	20
MANAGE THE DESIGNED LABEL	21
TRANSMIT TO SCALE	21
SAVE TO LIBRARY.....	21
SAVE AS FILE	21
EXIT LABEL DESIGN	21
PRESET OVERLAY PRINT	22
EXIT SPCT SOFTWARE.....	22

BRIEF INTRODUCTION

This manual introduces the operation method of two software tools. One is FLASH program upgrade software and the other is SPCT data manage software.

FLASH is a software tool for upgrade or modifying 8442 Labeling Scale program without reworking any hardware to the scale.

SPCT is a data manage software for 8442 Labeling Scale. It can improve work efficiency. The **SPCT** can be used to define the PLU data , to design label format and modify the configuration in the scale, etc. **SPCT** is easy for technical service man to install or maintain the scale.

INSTALLATION

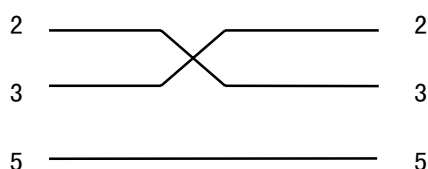
Basic requirement of hardware and software

- IBM or compatible PC system (486 or better PC compatible system)
- Microsoft Windows 95 or higher version. At least 8Mb RAM (16Mb above is better).
- At least 10MB HD space.
- One CD driver.
- Mouse compatible for compatible Win95.
- VGA, XGA or graphic display card of compatible Win95.

Communication cable

The inside connection of communication cable (P/N 123848) is shown as below:

PC End		Scale End
9 pin D-SUB		9 pin D-SUB



Install FLASH to HD

- Place the CD on the CD driver.
- Copy the FLASH directory to HD.

Install SPCT to HD

- Place the CD on the CD driver.
- Run SETUP.EXE program under the SPCT directory.
- Click **NEXT** to continue installation or click **CANCEL** to exit.
- Select the file of installing this program, then click **NEXT** to continue installation. You can choose the installation folder through pressing the **BROWSE** button.
- Select the menu of program group to add program icon, then click **NEXT** to continue.
- Click **NEXT**, the installation program start installing. The state bar will appear during the installation.
- Click **FINISH** when finish the program installation.

RUN FLASH

⚠ Do not plug in or plug out the communication cable when the equipment is power on, otherwise the hardware equipment will damaged.

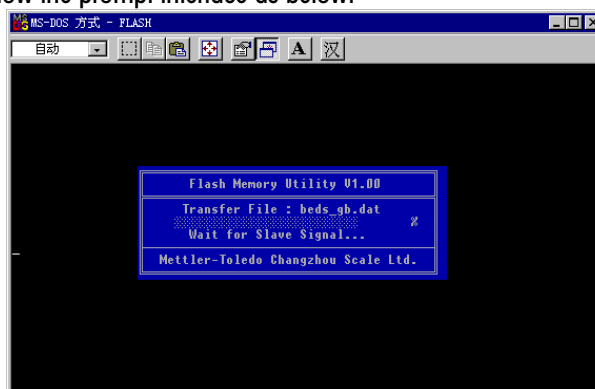
⚠ In case power supply shut down, during the program is updating, first to turn off the power. Waiting for the power supply come back, update the program over again per the above steps.

8442 Barcode Scale will self test when the scale power up, The error message "ERROR 100 CHECKSUM" will show, If any mistake program is found during self test. Then following the steps as below to update the program.

- ☞ Power down the scale and PC.
- ☞ Take out the communication cable from the package box. One end connects to the COM port of the scale and the other end connects to PC COM port.
- ☞ Power up PC, enter the Windows operating system.
- ☞ Enter DOS operating method.
- ☞ Enter FLASH directory (note: the software program file of the scale shall be under the same directory as FLASH.)
- ☞ Input command line via PC: **FLASH program file name 1 or 2**(input 1 for COM port 1, input 2 for COM port 2)

Note: Program file name includes suffix.

- ☞ Here PC display will show the prompt interface as below.



- ☞ Power up Barcode Scale and start to update the program. The state bar will show the updating status. It will take about 5 minutes. During this process, to press the key "ESC" can interrupt the update, then press any key to exit. Note: When the update is interrupted, the program in Barcode Scale will be failure .
- ☞ When the program update complete, Barcode Scale will reset automatically and run new program. Here, press any key on PC to exit.

If no error message appears when the equipment power on and self test, then to update the program per following the steps:

- ☞ Power down the Barcode Scale and PC.
- ☞ Take out the communication cable from the package box. One end connects to the COM port of the scale and the other end connects to PC COM port.
- ☞ Power up PC, enter the Windows operating system.
- ☞ Enter DOS operating method.
- ☞ Power up Barcode Scale, When display is stable, then press the key

CODE 2 4 6 8 1 3 5 7 * , enter the service menu.

- ☞ Press the key 2 2 *
- ☞ Enter FLASH directory (note: the software program file of the scale shall be under the same directory as FLASH.)

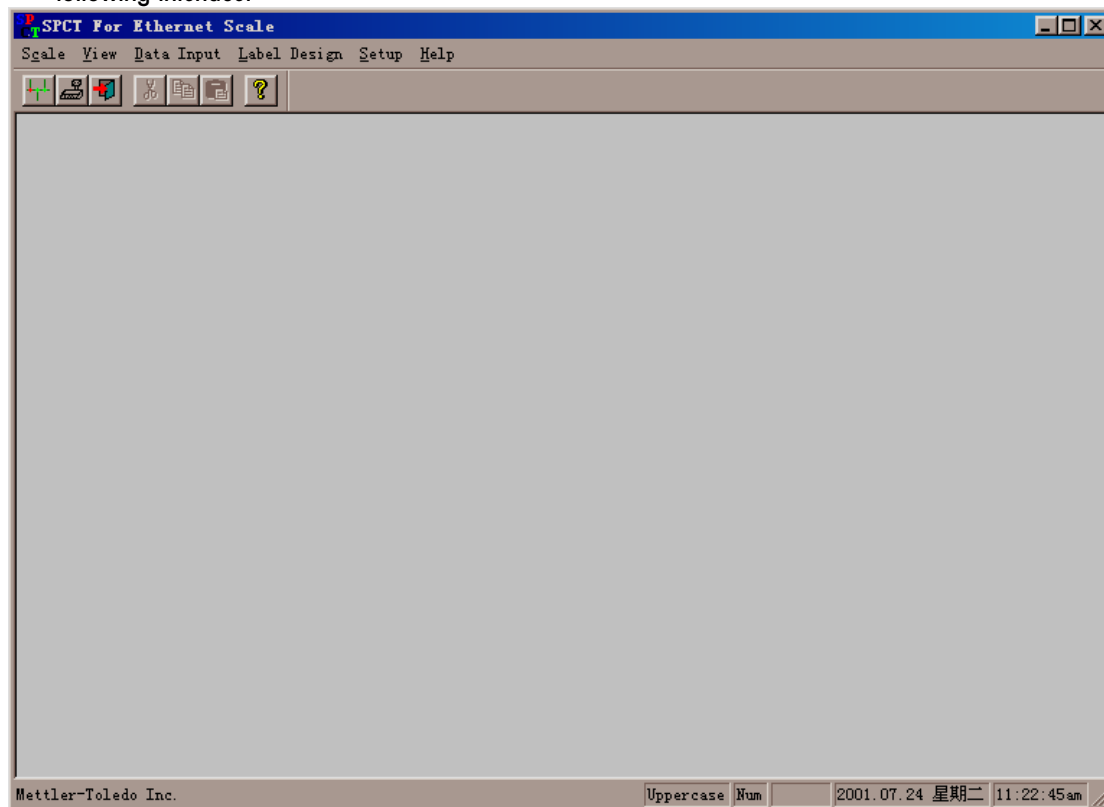
- ☞ Input command line via PC: **FLASH program file name 1 or 2**(input 1 for COM port 1, input 2 for COM port 2).
- Note: Program file name shall include suffix.**
- ☞ Here the PC display will show prompt interface, and start update program. The state bar will show updating status. It will take about 5 minutes. During this process, to press the key "**ESC**" can interrupt the update, then press any key to exit. Note: When interrupt the update, the program in Barcode Scale will be failure .
- ☞ The Barcode Scale will reset automatically and run new update program. Here, press any key on PC to exit.

STARTUP SPCT

The chapters hereinafter introduce the operating method of **SPCT** data manage software.

⚠ Do not plug or unplug the communication cable when the equipment is power on, otherwise the hardware equipment will damaged.

- ✎ Power down the Barcode Scale and PC.
- ✎ Take out the communication cable from the package box. One end connects to the COM port of the scale and the other end connects to PC COM port.
- ✎ Power up the Barcode Scale and make it in operation state.
- ✎ Power up PC, enter the Windows operating system.
- ✎ Click **START** button and enter Menu Program Group, Click **SPCT** program icon and show the following interface:



MANAGE SCALE No.

First to configure the scale numbers of scale network in the shop, prior to edit data information.

Configure scale No.

- ☞ Select **SELECT SCALE** sub menu in **SCALE** menu.
- ☞ Here will show the dialog box of configure scale No. as fig. 4-1 :
- ☞ Select the scale No. from the selectable scale numbers list which are in scale-net. Then, press **ADD** button and move these scale numbers to the selected scale list.
- ☞ Using **REMOVE** button can delete the selected scale number.
- ☞ Press **OK** button to save the created information and exit the dialog box. If press **CANCEL** button, the created information will not be saved and exit directly.

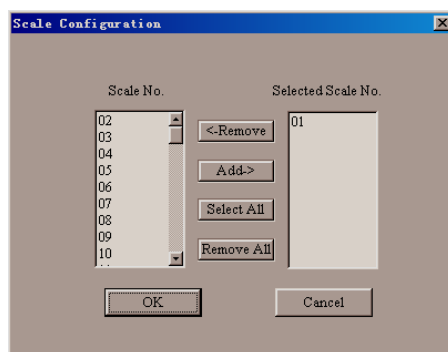


Fig. 4-1

Manage Scale No.

- ☞ Select sub-menu "**SCALE STATUS**" in **SCALE** menu, here will show 4-2 dialog box as below.

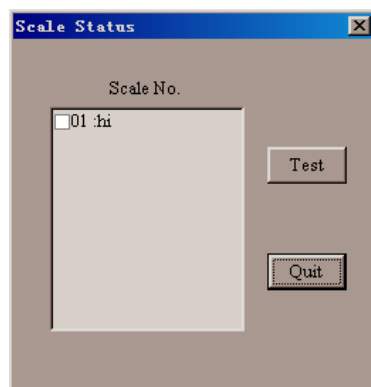


Fig. 4-2

- ☞ Press **TEST** button , the system will automatically check the status of the configured scales. If this scale is on line, the sign “ √ ” will appear in the check box .
- ☞ Press **QUIT** button to exit manage scale dialog box.

SETUP

Set time

- ☞ Select **DATE TIME** sub-menu under **SETUP** menu.
- ☞ Here will show setup time dialog box as fig. 5-1.
- ☞ If want the scale time corresponding with PC time , select **PC TIME** in the **mode** dialog box, then press **PC→SC** button to transmit the data to the scale.
- ☞ If want to manual set the scale time, select **SET TIME** in the **MODE** dialog box. Then press scroll key in **TIME SETUP** dialog box, set date and time separately. After completing time set, press the button "**PC→SC**", the data will transmit to the scale.
- ☞ When completing transmission, press "**OK**" button and exit SET TIME dialog box.

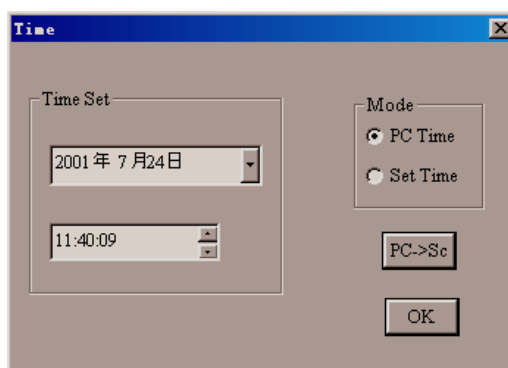


Fig. 5-1

Set Network Media

This is used to configure interface selection and relevant parameters of PC and Scale.

- ☞ Select **COMMUNICATION** sub-menu in **SETUP** menu.
- ☞ Here will show configure dialog box as fig. 5-2(1). Set Ethernet method to communicate. To input the relevant value corresponding to **SCALE NAME**, **IP ADDRESS**, **COM PORT**. (**IP ADDRESS** shall be consistent with the scale IP address, **COM PORT** value is all 3001).
- ☞ If select **COM PORT** , the interface will be as the fig. 5-2(2). Select the PC COM port which connects scale COM port. It can communicate via the scale COM port.
- ☞ Click **OK** to exit after completing setup.

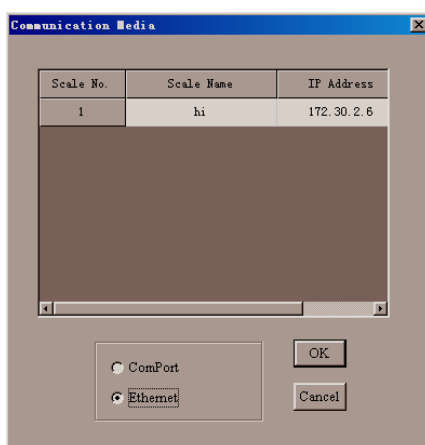


Fig. 5-2(1)

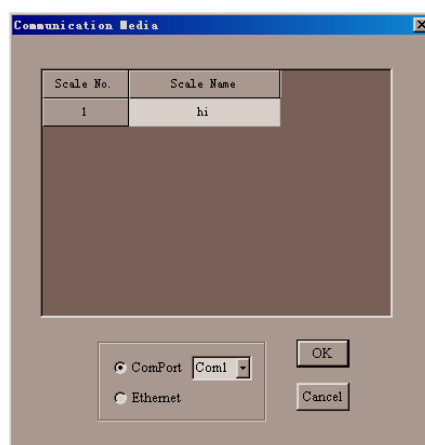
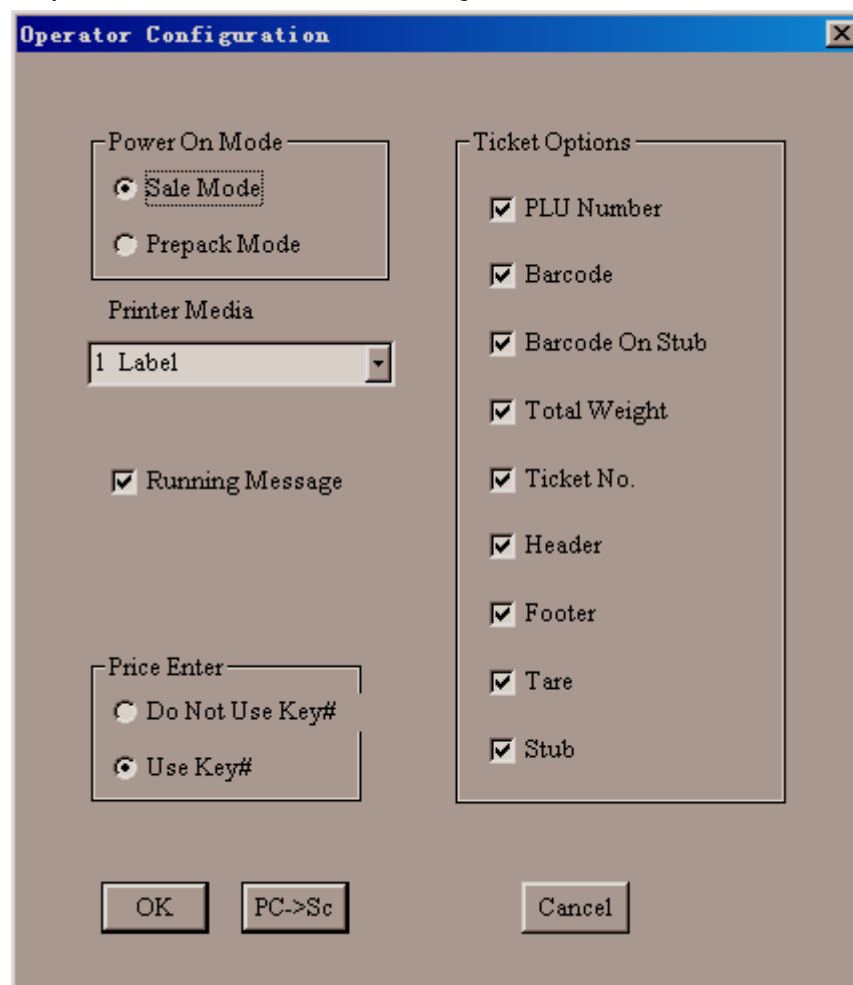


Fig. 5-2(2)

Set operator configure

- ☞ To select **OPERATOR CONFIGURE** sub-menu in **SETUP** menu will show fig. 5-3.

- ☞ Press **PC→SCALE** button, data can transmit to the scale: Press **OK** to save the configuration and exit. Or press **CANCEL** to exit without storage.



The image shows a software dialog box titled "Operator Configuration". It contains several sections for configuring the system:

- Power On Mode:** Two radio buttons are present: "Sale Mode" (which is selected) and "Prepack Mode".
- Printer Media:** A dropdown menu currently displays "1 Label".
- Running Message:** A checked checkbox.
- Price Enter:** Two radio buttons: "Do Not Use Key#" and "Use Key#" (which is selected).
- Ticket Options:** A list of seven items, each with a checked checkbox: "PLU Number", "Barcode", "Barcode On Stub", "Total Weight", "Ticket No.", "Header", "Footer", "Tare", and "Stub".

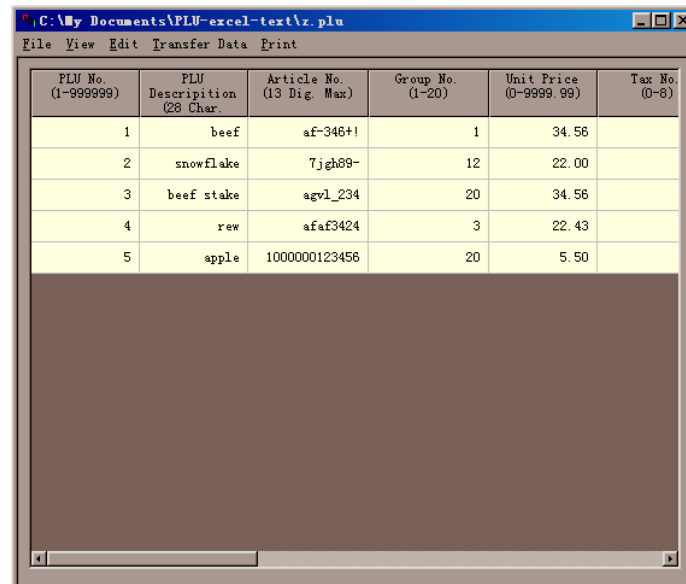
At the bottom of the dialog, there are three buttons: "OK", "PC->Sc", and "Cancel".

Fig. 5-3

DATA ENTRY

PLU

Select **PLU** sub-menu in **DATA INPUT** menu. Here will show PLU main menu as fig. 6-1.



PLU No. (1~999999)	PLU Description (28 Char.)	Article No. (13 Dig. Max)	Group No. (1~20)	Unit Price (0~9999.99)	Tax No. (0~8)
1	beef	af-346+!	1	34.56	
2	snowflake	7jgh89-	12	22.00	
3	beef stake	agvl_234	20	34.56	
4	rew	afaf3424	3	22.43	
5	apple	1000000123456	20	5.50	

Fig. 6-1

Create PLU

Click **NEW** sub-menu in **FILE** menu. Here show **Input box** as fig. 6-2 or open a created PLU file in **FILE** menu.

To input the PLU data as table list below:

Item	Entry Scope
PLU No.	0~999999
Article Number	Max.13 digit
Commodity name	28 characters
Group Number	1~20
Unit price	0~9999.99
Tax No.	0~8
Tare No.	0~16
Label Format No.	0~11
Font	0~29
Advertisement No.	0~10
Package Date Text	0~3
Sell by Date TEXT	0~3
Best Before Date TEXT	0~3
Sell By Offset	0~499
Best Before Offset	0~499
Fix Weight	0~99999
Annex text No.	0~50
Preset Key	1~56

- Press **ADD PLU** in **EDIT** menu, thus add one PLU. Press **DEL PLU** in **EDIT** menu, the PLU where the cursor positioned will be deleted.
- Select **SAVE** in **FILE** menu to save the created PLU. This file name suffix is ***.PLU**

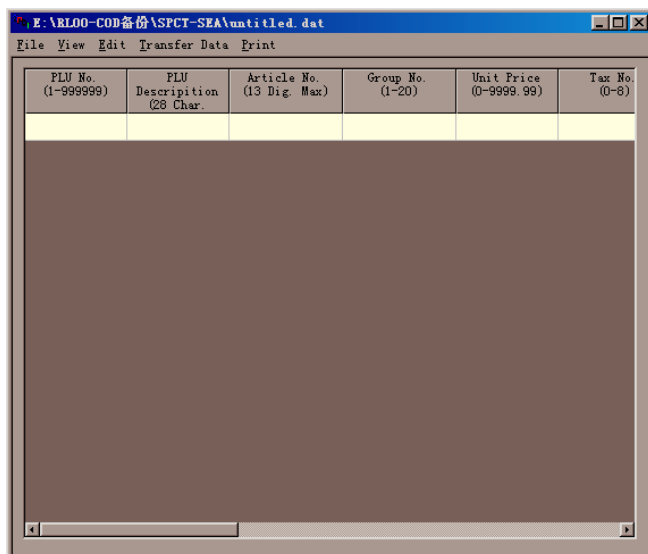


Fig. 6-2

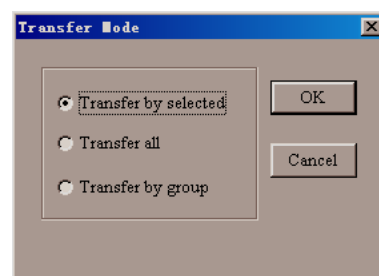


Fig. 6-4

Download PLU

- Select **PC-> SC** button in **TRANSFER DATA** menu, and will show the dialog box as fig. 6-4.
- Select **TRANSFER ALL** or **TRANSFER BY SELECT** or **TRANSFER BY GROUP** PLU.
- Click **OK** button and show dialog box as fig. 6-5.
- Select the required scale no. then click **TRANSFER** button to start transmission. The state grid as fig. 6-6 will show during down loading, This grid will disappear when completing down load. If there is already same PLU Number in the scale before down load, this PLU will be overlaid.

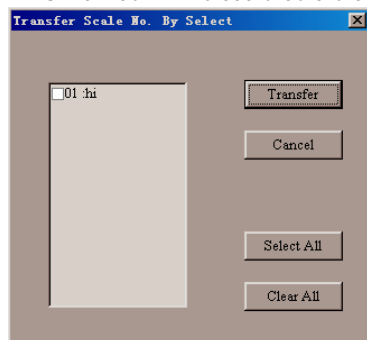


Fig. 6-5

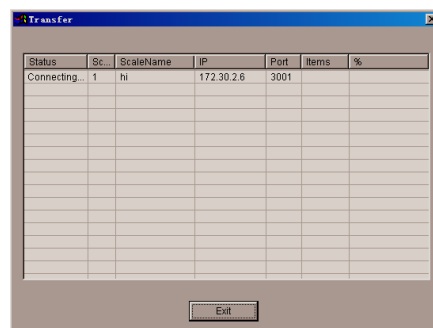


Fig. 6-6

Upload PLU

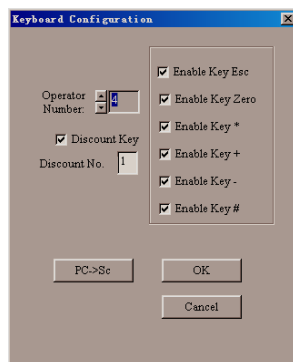
- Select **SC-> PC** button in **TRANSFER DATA** menu, and will show the dialog box as fig. 6-5.
- Select the required scale no. then click **TRANSFER** button to start transmission. The state grid as fig. 6-6 will show during up loading, This grid will disappear when completing up load. And a PLU file SCX.plu will be created.(x-means the scale no.)

Keyboard Configuration

- Select **KEYBOARD CONFIGURATION** sub-menu in **DATA INPUT** menu.

- Here will show keyboard configuration dialog box as fig. 6-11.

Fig. 6-11



- To set operator number(1~4) by pressing scroll key in **OPERATOR NUMBER** box .
- Select whether to use discount key, If use discount key, click the relevant check box, here will show select **DISCOUNT NO.** and input discount No.
- Click relevant check box: such as **ENABLE KEY ESC**, **ENABLE KEY ZERO**, **ENABLE KEY "*"**, **ENABLE KEY "+"**, **ENABLE KEY "-"** or **ENABLE KEY "#"** .
- Press **PC->SC** button to transmit the above data to the scale, The corresponding data in the scale will be cleared.
- To save the created data by pressing **OK** button and exit the dialog box, or press **CANCEL** button to exit without storage.

Group

- Select **GROUP** sub-menu in **DATA INPUT** menu.
- Here will show GROUP dialog box as fig. 6-12.

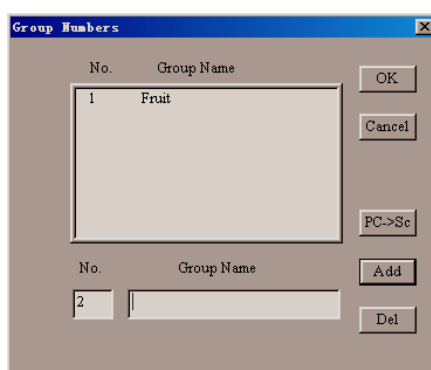


Fig. 6-12

- To input new Group No. and Group Name in the lower editing dialog box. Then press **ADD** button. This Group No. and Group Name will be listed in the upside dialog box.
- Select the Group in the list to be deleted, then press **DELETE** button. This Group will be deleted from the list.
- Select the Group in the list to be modified, then use mouse to double click it. This Group will appear in the lower editing dialog box. Then press **ADD** button after modification. This modified Group will be shown in the list.
- Press **PC->SC** button, the Group data in the current list will overlay the relevant data in the scale.
- Press **OK** button to save the above editing result and exit the current dialog box. If press **CANCEL** button, the above editing result will not be saved and exit directly.

Operator

- Select **OPERATOR** sub menu in **DATA INPUT** menu.

☞ Here show OPERATOR dialog box as fig. 6-13 .

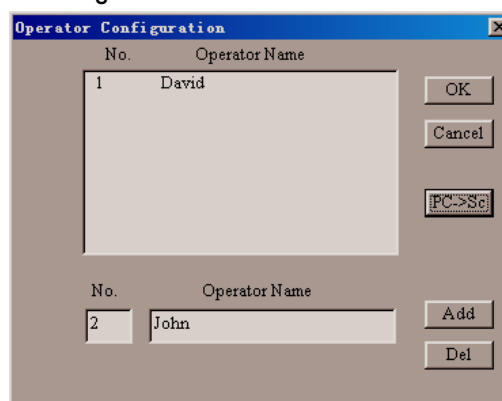


Fig. 6-13

- ☞ To input new Operator No. and Name in the lower editing dialog box , then press **ADD** button. This operator will be listed in the upside dialog box.
- ☞ Select the operator in the list to be deleted, then press **DELETE** button. This operator will be deleted from the list.
- ☞ Select the operator in the list to be modified , then use mouse to double click it. This operator will be shown in lower editing dialog box. Press **ADD** button after making necessary modification , the modified operator will be shown in the list.
- ☞ Press **PC->SC** button, the current operator data in the list will overlay the corresponding data in the scale ,
- ☞ Press **OK** button to save the above edit result and exit the current dialog box. Or press **CANCEL** button to exit directly without storage.

Tare

- ☞ Select **TARE** sub menu in **DATA INPUT** menu.
- ☞ Here will show TARE dialog box as fig. 6-14.
- ☞ To input tare number and tare value of the new tare in lower edit dialog box, then press **ADD** button. This tare will be listed in the upside dialog box.
- ☞ Select the tare in the list to be deleted , then press **DELETE** button.
- ☞ Select the tare in the list to be modified , then use mouse and double click the tare. This tare will be shown in the lower edit dialog box. Make some necessary modification and press **ADD** button. The modified tare will be listed in the upside dialog box.
- ☞ Press **PC->SC** button, The current tare in the list will overlay the corresponding data in the scale.
- ☞ Press **OK** button to save the above edit result and exit current dialog box. Or press **CANCEL** button and exit directly without storage.

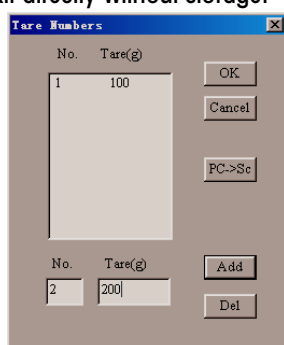


Fig. 6-14

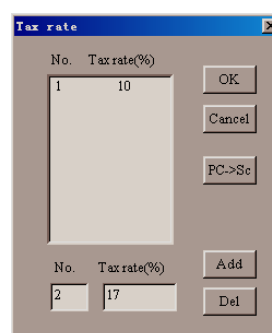


Fig. 6-15

Tax Rate

- ☞ Select **TAX RATE** sub-menu in **DATA INPUT** menu.
- ☞ Here will show TAX RATE dialog box as fig. 6-15.

- ☞ To input new tax rate number and tax rate in the lower editing dialog box. Then press **ADD** button, this tax rate will be listed in the upside dialog box.
- ☞ Select the tax rate in the list to be deleted. then press **DELETE**. This tax rate will be deleted from the list.
- ☞ Select the tax rate in the list to be modified and use mouse double click it. This tax rate will show in the lower editing dialog box. Make necessary modification and press **ADD** button. The modified tax rate will be listed in the upside dialog box.
- ☞ Press **PC->SC** button. The current tax rate in the list will overlay the corresponding one in the scale.
- ☞ Press **OK** button to save the above editing result and exit the current dialog box. If press **CANCEL**, the editing result will not be saved and exit directly.

Decrease Percent

- ☞ Select **DISCOUNT** sub menu in **DATA INPUT** menu.
- ☞ Here will show discount dialog box as fig. 6-16.
- ☞ To input Discount Percent, Display Character and Print Character in the corresponding discount percent box.
- ☞ Press **PC->SC** button, The current decrease percent in the list will overlay the corresponding one in the scale.
- ☞ Press **OK** button to save the above editing result and exit the current dialog box. Or press **CANCEL** button to exit directly without storage,

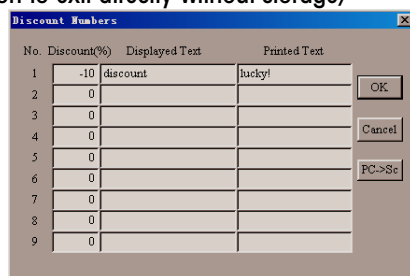


Fig. 6-16

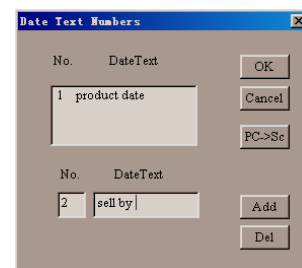


Fig. 6-17

DATE TEXT

- ☞ Select **DATE TEXT** sub menu in the **DATA INPUT** menu.
- ☞ Here will show DATE TEXT dialog box as fig. 6-17.
- ☞ To input new date text No. and date text in the lower editing dialog box. Then press **ADD** button, this date text will be listed in the upside dialog box.
- ☞ Select the date text in the list to be deleted, then press **DELETE** button. This date text will be deleted from the list.
- ☞ Select the date text in the list to be modified, and use mouse to double click it. This date text will show in the lower editing dialog box and make some necessary modification, then press **ADD** button. This modified date text will list in the upside dialog box.
- ☞ Press **PC->SC** button, the current date text in the list will overlay the corresponding one in the scale.
- ☞ Press **OK** button to save the above editing result and exit the current dialog box. Or press **CANCEL** button to exit directly without storage,

Barcode

- ☞ Select **BARCODE** sub menu in the **DATA INPUT** menu.
- ☞ Here will show barcode format dialog box as fig. 6-18.
- ☞ To input new barcode format number and barcode format content in the lower editing dialog box, then press **ADD** button. This barcode format will be listed in the upside dialog box.
- ☞ Select the barcode format in the list to be deleted, then press **DELETE** button. This barcode format will be deleted from the list.
- ☞ Select the barcode format in the list to be modified, then use mouse to double click it. This barcode format will be shown in the lower editing dialog box. Make some necessary modification and press **ADD** button. The modified barcode format will be listed in upside dialog box.
- ☞ Press **PC->SC** button. The current barcode format in the list will overlay the corresponding one in the scale.

- Press **OK** button to save the above editing result and exit the current dialog box. Or press **CANCEL** button to exit directly without storage.

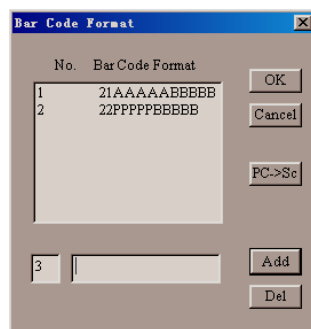


Fig. 6-18

Running Message

- Select **RUNNING MESSAGE** sub menu in **DATA INPUT** menu.
- Here will show the running message dialog box as fig. 6-19.
- To input the running message content in the editing box.
- Press **PC->SC** button. The current running message in the edit block will overlay the corresponding one in the scale.
- Press **OK** button to save the above edit result and exit the current dialog box. Or press **CANCEL** button to exit directly without storage,

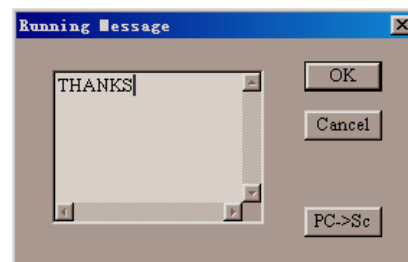


Fig. 6-19

Header Footnote

- Select **HEADER AND BOTTOM** sub menu in the **DATA INOUT** menu.
- Here will show header footnote dialog box as fig. 6-20.
- To input the header content in HEADER edit box and footnote content in FOOTNOTE edit box.
- To input the font size corresponding with header and footnote in FONT TYPE box.
- Press **PC->SCALE** button. The current header footnote in the edit box will overlay the corresponding one in the scale.
- Press **OK** button to save the above editing result and exit the current dialog box. Press **CANCEL** button to exit directly without storage.

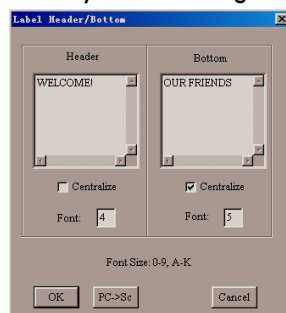


Fig. 6-20

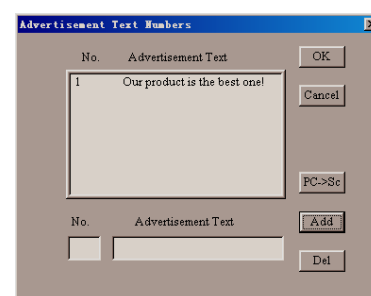


Fig. 6-21

ADVERTISE TEXT

- Select **ADVERTISEMENT** sub menu in **DATA INPUT** menu.
- Here will show advertisement dialog box as fig. 6-21.
- To input new advertisement number and advertisement content in the lower edit dialog box, then press **ADD** button. This advertise text will be listed in the upside dialog box.
- Select the advertisement in the list to be deleted, then press **DELETE** button. This advertisement will be deleted from the list.
- Select the advertisement in the list to be modified, and use mouse double click it. This advertisement will be shown in the lower edit dialog box. Make some necessary modification and press **ADD** button. The modified advertise text will be listed in the upside dialog box.
- Press **PC->SC** button. The current advertising text in the list will overlay the corresponding one in the scale.

- Press **OK** button to save the above edit result and exit the current dialog box. Or press **CANCEL** button to exit directly without storage.

STORE NAME

- Select the **STORE NAME** sub menu in the **DATA INPUT** menu.
Here will show store name dialog box as fig. 6-22.

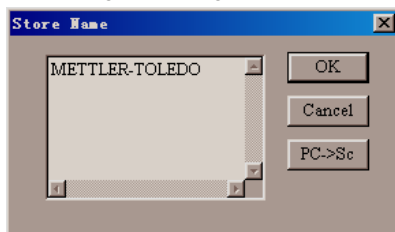


Fig. 6-22

- To input shop name in edit box.
- Press **PC->SC** button. The current shop name in the edit box will overlay the corresponding one in the scale.
- Press **OK** button to save the above edit result and exit the current dialog box. Or press **CANCEL** button to exit directly without storage.

CONFIGURE GENERAL LABEL FORMAT

SERVICE LABEL

- Select **BY WEIGHT LABEL** in **DEFAULT LABEL** sub menu in **DATA INPUT** menu.
- Here will show by weight label dialog box as fig. 6-23.

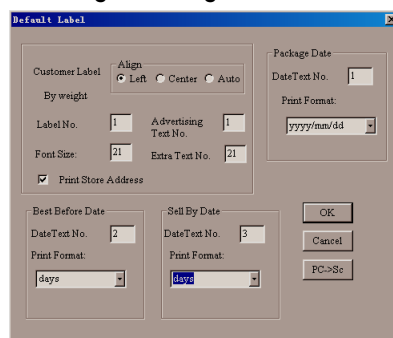


Fig. 6-23

- To input corresponding data in each edit box.
- Press **PC->SC** button. The current service label format data will overlay the corresponding one in the scale.
- Press **OK** button to save the above edit result and exit the current dialog box. Or press **CANCEL** button to exit directly without storage,

Note: The setup method for "by count label" and "by weight label" is same.

TOTAL LABEL

- Select **SUBTOTAL LABEL** in **DEFAULT LABEL** sub menu in **DATA INPUT** menu.
- Here will show the TOTAL LABEL dialog box as fig. 6-24.

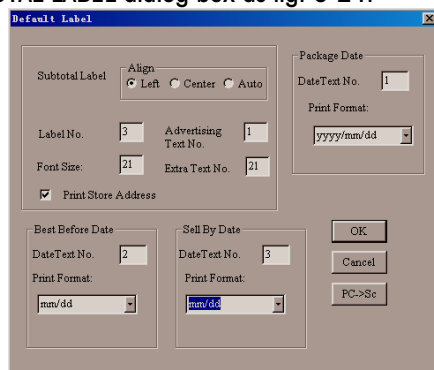


Fig. 6-24

- ☞ To input the corresponding data in each edit box.
- ☞ Press **PC->SC** button. The TOTAL LABEL FORMAT data in the current edit box will overlay the corresponding data in the scale.
- ☞ Press **OK** button to save the above edit result and exit the current dialog box. Or press **CANCEL** button to exit directly without storage.

Prepack label

- ☞ Select **BY WEIGHT PREPACK LABEL** in **DEFAULT LABEL** sub menu in **DATA INPUT** menu.
- ☞ Here will show PREPACK LABEL dialog box as fig. 6-25.
- ☞ To input the corresponding data in each edit box.
- ☞ Press **PC->SC** button. The prepack label format data in the current edit box will overlay the corresponding data in the scale.
- ☞ Press **OK** button to save the above edit result and exit the current dialog box. Or press **CANCEL** button to exit directly without storage.

Fig. 6-25

Note: The setup method for "By Count Prepack label" and "By Weight Prepack label" is same.

DESIGN LABEL FORMAT

INTERFACE

- ☞ Select **LABEL DESIGN** in main menu and show **LABEL DESIGN** interface as fig. 7-1.

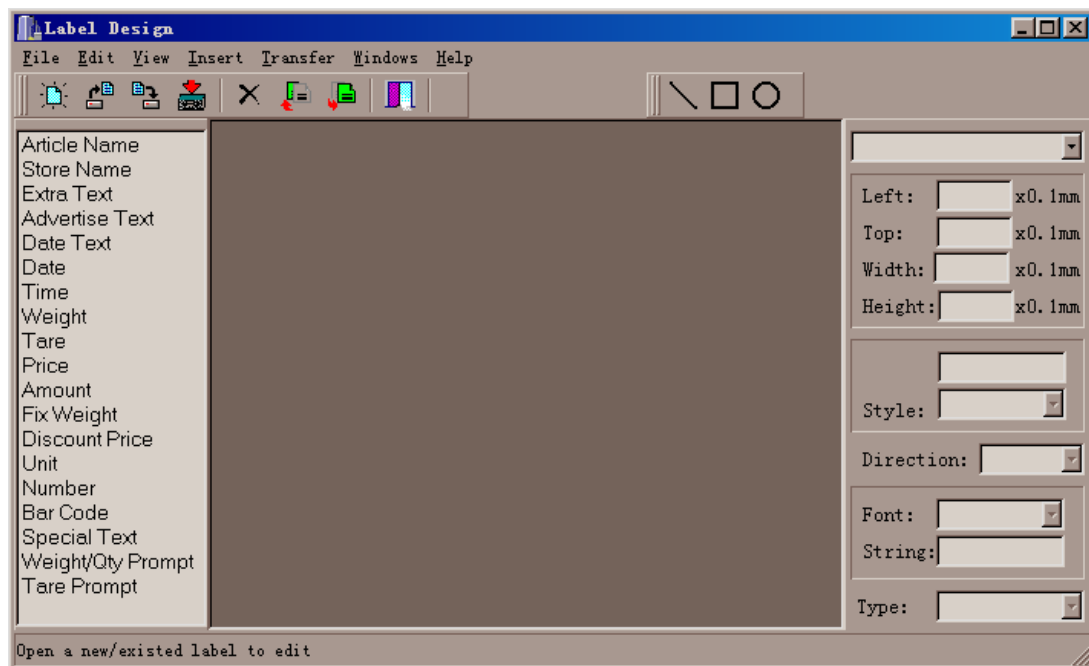


Fig. 7-1

NEW LABEL

- ☞ Select **NEW** option in **FILE** menu. Here will show dialog box as fig. 7-2.

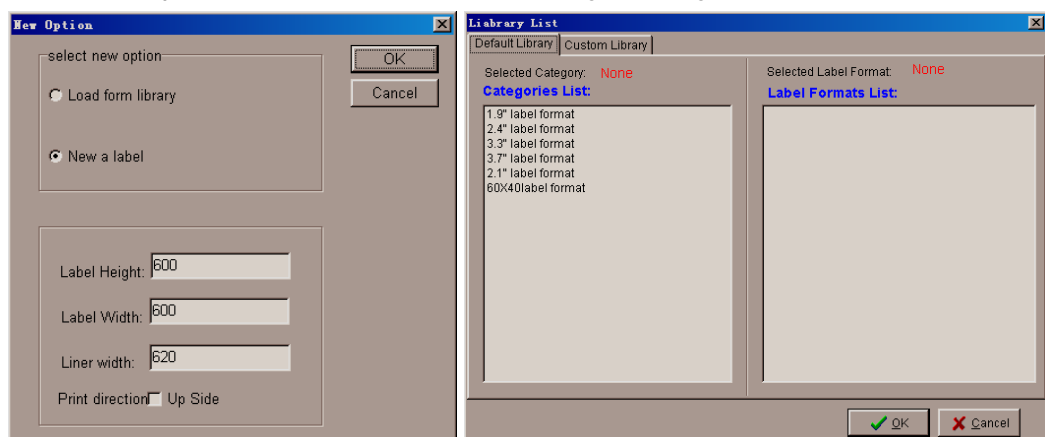


Fig. 7-2

Fig. 7-3

- ☞ Select **NEW LABEL**, then input data in **LABEL HEIGHT**, **LABEL WIDTH** and **LINER WIDTH** based on the label size. Select **UP SIDE** in **PRINT DIRECTION**, if require conversing print, then press **OK**, The edit menu will show and go along label design.

- ☞ If select **LOAD FROM LIBRARY** , press **OK**. Here will show dialog box as fig. 7-3. There are two label libraries of **DEFAULT LIBRARY** and **CUSTOM LIBRARY**. The **CUSTOM LIBRARY** stored label format which is designed by user. Select any format, press **OK** and reedit it.

LOAD LABEL FROM LIBRARY

- ☞ When read the existing label format from the library, only to select **LOAD FROM LIBRARY** option in **FILE** menu. The label library will show as fig. 7-3. and select the required label format.

OPEN LABEL FILE

- ☞ Select **OPEN** option in **FILE** menu and appear a dialog box. Select label file and **OPEN** it.

EDIT LABEL

- ☞ When create a new label or open an existing label , will enter edit state shown as fig. 7-5.

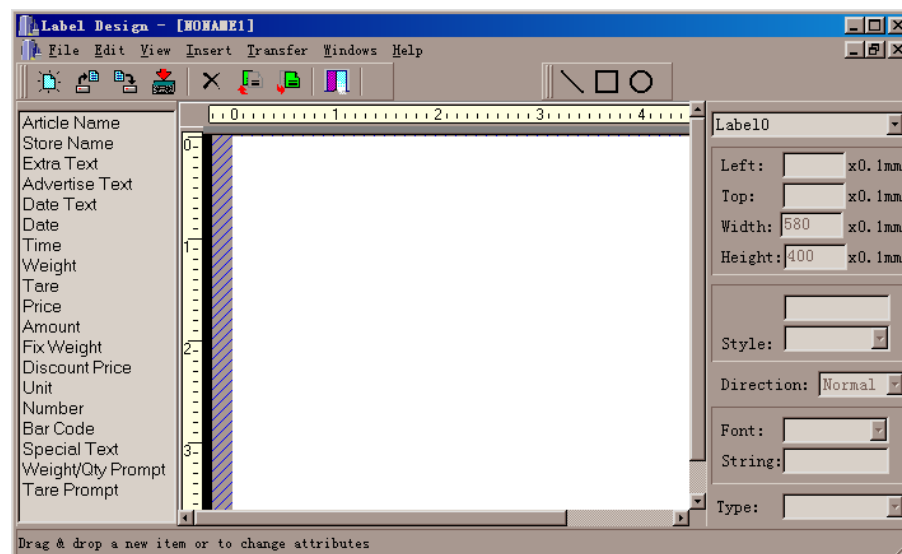


Fig. 7-5

- ☞ Select **CHANGE LABEL SIZE** option in **EDIT** menu, To make necessary change in fig. 7-6.



Fig. 7-6

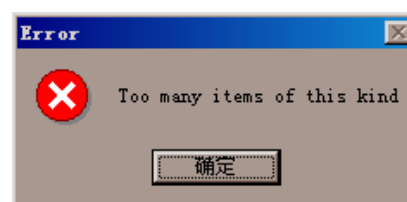


Fig. 7-7

- ☞ If require to place a required item in label, one method is : use mouse to select a certain element on the left side element option, then press down and hold the left mouse key, then pull it to a proper position. The other method is: select required option and automatically insert it to label by selecting **INSERT** menu. If this element has already existed in the label, the prompt will show in fig. 7-7. To select any one of beeline, quadrangle, circle , use mouse to click in the label . To use mouse to pull the existing element can change its position and size. Or in right property box to input or to select relevant item to change the element property.

- ☞ If require to delete an element, using mouse to select this element , then select **DELETE** in **EDIT** menu or press "Delete" key on PC directly.

MANAGE THE DESIGNED LABEL

TRANSMIT TO SCALE

- ☞ Select **TRANSFER** menu , here will show fig. as 7-8. Select **LABEL No.** and **SCALE**, choice **YES** to send , then press **OK** and show fig. as 7-9.

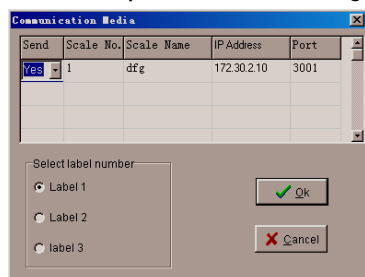


Fig. 7-8

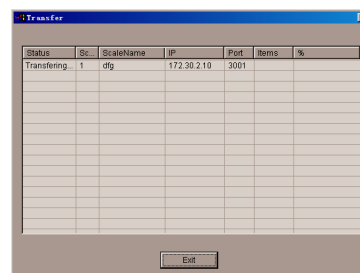


Fig. 7-9

SAVE TO LIBRARY

- ☞ Select **SAVE TO LIBRARY** option in **FILE** menu as shown in fig. 7-3. Select **CUSTOM LIBRARY** and click **ADD** button and will show 7-10 dialog box.

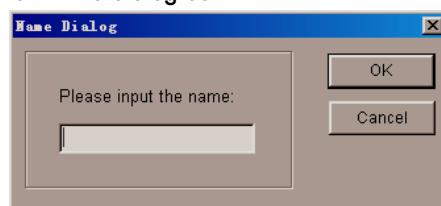


Fig. 7-10

- ☞ To input label list name , then press **OK**. Use mouse to select this name in fig. 7-3. Click **ADD** button, the dialog box 7-10 will appear again. To input label list name, then press **OK**.

SAVE AS FILE

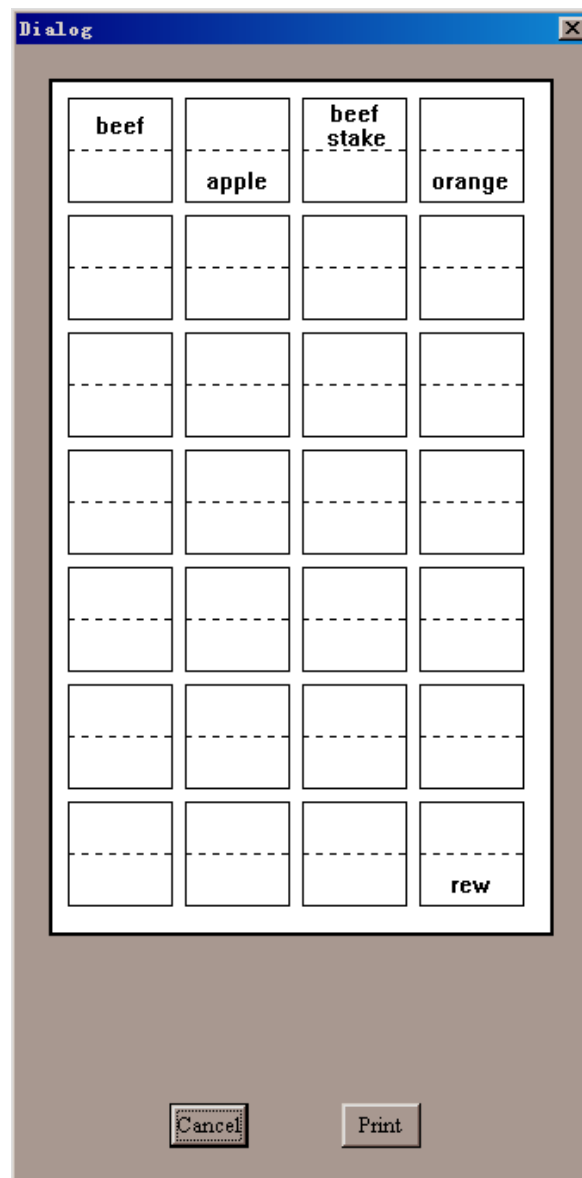
- ☞ Select **SAVE** or **SAVE AS** option in **FILE** menu. Then will appear a dialog box.
☞ Select path and file name **SAVE**.

EXIT LABEL DESIGN

- ☞ Select **EXIT** option in **FILE** menu or close window directly and back to **SPCT** software main interface.

PRESET OVERLAY PRINT

☞ Select **PLU** sub menu in **DATA INPUT**. Enter PLU interface. Select **PRINT** in **PRESET OVERLAY PRINT** menu. If want to preview, select **PREVIEW** option as the fig. shown below:



EXIT SPCT SOFTWARE

☞ To select **EXIT** sub menu in **SCALE** menu or **EXIT** button in toolbar will exit SPCT software.

METTLER TOLEDO

Scales & Systems

1900 Polaris Parkway
Columbus, Ohio 43240

(11/01).00

METTLER TOLEDO®
is registered trademarks of Mettler-Toledo, Inc.
©2001 Mettler-Toledo, Inc.